



Grupo **PolYanguas**

**Smile**

**Implant Series**

#### Submerged Type

Narrow - SFN3808, SFN3810, SFN3812, SFN3814  
Regular - SFR4508, SFR4510, SFR4512, SFR4514  
Wide - SFW5308, SFW5310, SFW5312, SFW5314

#### Internal Type

Narrow - SIFN3808, SIFN3810, SIFN3812, SIFN3814  
Regular - SIFR4508, SIFR4510, SIFR4512, SIFR4514  
Wide Neck- SIFW5308N, SIFW5310N, SIFW5312N, SIFW5314N

#### External Type

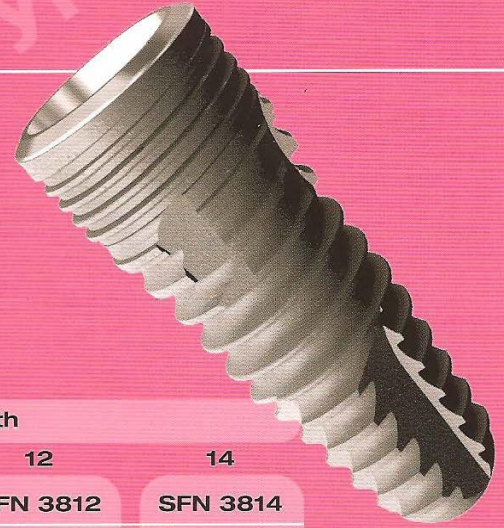
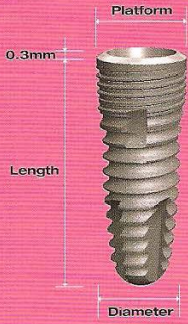
Narrow - SEFN3808, SEFN3810, SEFN3812, SEFN3814  
Regular - SEFR4508, SEFR4510, SEFR4512, SEFR4514  
Wide - SEFW5308, SEFW5310, SEFW5312, SEFW5314



**DIO**

2008 Version. 1

# Submerged Type



			Length			
	Platform	Diameter	8	10	12	14
Narrow	3.8	3.3	SFN 3808	SFN 3810	SFN 3812	SFN 3814
Regular	4.5	4.0	SFR 4508	SFR 4510	SFR 4512	SFR 4514
Wide	5.3	4.8	SFW 5308	SFW 5310	SFW 5312	SFW 5314

Narrow



SFN3808



SFN3810



SFN3812



SFN3814

Regular



SFR4508



SFR4510



SFR4512



SFR4514

Wide



SFW5308



SFW5310



SFW5312



SFW5314

Narrow



SIFN3808



SIFN3810



SIFN3812



SIFN3814

Regular



SIFR4508



SIFR4510



SIFR4512



SIFR4514

Wide Neck



SIFW5308N



SIFW5310N



SIFW5312N



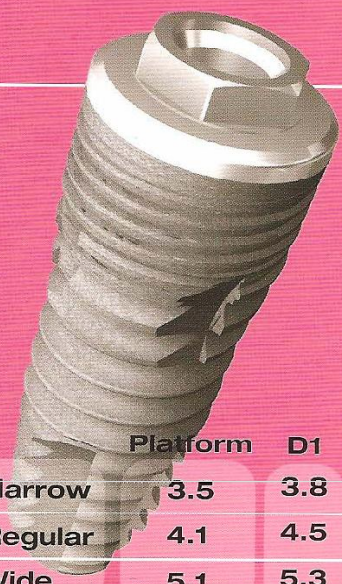
SIFW5314N

	Platform	D1	D2	Collar	Length			
					8	10	12	14
Narrow	4.8	3.8	3.3	2.0	SIFN 3808	SIFN 3810	SIFN 3812	SIFN 3814
Regular	4.8	4.5	4.0	2.0	SIFR 4508	SIFR 4510	SIFR 4512	SIFR 4514
Wide Neck	6.5	5.3	4.8	2.0	SIFW 5308N	SIFW 5310N	SIFW 5312N	SIFW 5314N



Internal Type





## External Type



External Type

	Platform	D1	D2	Hex	Length			
					8	10	12	14
Narrow	3.5	3.8	3.3	2.4	SEFN 3808	SEFN 3810	SEFN 3812	SEFN 3814
Regular	4.1	4.5	4.0	2.7	SEFR 4508	SEFR 4510	SEFR 4512	SEFR 4514
Wide	5.1	5.3	4.8	3.4	SEFW 5308	SEFW 5310	SEFW 5312	SEFW 5314

Narrow



SEFN3808



SEFN3810



SEFN3812



SEFN3814

Regular



SEFR4508



SEFR4510



SEFR4512



SEFR4514

Wide



SEFW5308



SEFW5310



SEFW5312



SEFW5314

## Design –

### Double-thread

Double-Thread is designed to prevent damage to the cortical bone. It enhances the initial stability and provides the function of preventing cortical absorption from bacterial infection.

### Root Form Design(Body-thread)

Tapered profile body thread facilitates ease of initial insertion, high primary stability on soft bone, and prevention of damages to adjacent teeth roots.

### Cutting Edge

Dual cutting edges on double threaded part and body threaded part enhance ease of self tapping and facilitate stability by minimizing bone resistance.

### Apex

The apex profile facilitates ease of insertion, reduces potential run-out, and minimizes bone resistance.

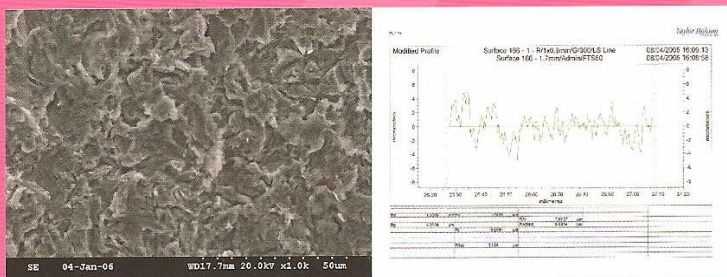


## RBM Surface

RBM (Resorbable Blast Media) surface treatment is a blasting process using absorbable particles that mainly consist of Hydroxyapatite(beta-Tricalcium Phosphate, Alpha-Tcp, TTcp, Calcium Pyrophosphate(CPP)). It provides even roughness without leaving embedded debris and acid residue on the implant surface.

Its successful clinical results are proved through a number of clinical cases.

DIO SM Implant System applies this RBM surface treatment to the implant surface that ensures even surface roughness Ra 1.2 ~ 1.5 through an automated system.



The higher Ra Value, the higher roughness



Imaginative ideas into leading products



[www.dio.co.kr](http://www.dio.co.kr)

 **Grupo PolYanguas**

[www.polyanguas.net](http://www.polyanguas.net)

[info@polyanguas.net](mailto:info@polyanguas.net)

**DIO** IMPLANT

